

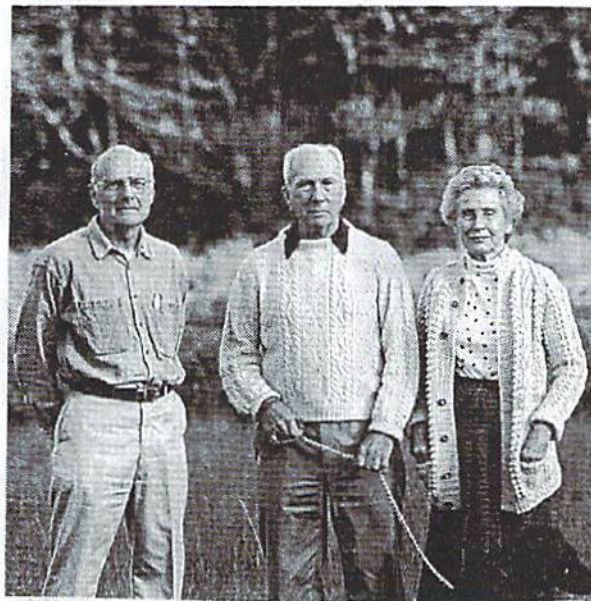
Land Trust Receives Gift of Land at the Nook

The Wildlands Trust of Southeastern Massachusetts has accepted a gift of 3.4 acres of land in Duxbury from Mary Louise and David Mittell. The property will be known as Brewster Woods in honor of the area's first settler. According to Jerry Ingersoll of Bourne, President of the Duxbury-based land trust, "We are very grateful to the Mittells for this gift of good land. We have been impressed from the first by this couple's love of their own land and their dedication to both the heritage and future of their community."

The land is upland located along the southern edge of Eagle's Nest Marsh and includes a major portion of the far vista to the Marshall St. bridge and the Basin and Powder Point. The land is largely dry, though an intermittent stream runs from a small woodland pool on adjacent property. The land slopes up gently from the edge of the marsh and is covered with a second growth woodland of pitch pine, white pine, crab apple, black cherry, and a few beech. A turn of the century photograph shows much of the land as open agricultural land used for cattle and sheep grazing with a scattering of small trees which have now become massive wolf trees.

David Mittell said that "This land has been in Mary Louise's family since the 1920s. It was originally part of the land settled by William Brewster, one of Duxbury's 1627 settlers. We walk our Labradors there every day. We have been impressed with the energy and broad positive impact on the town and the region of the Wildlands Trust. We feel that giving it to this land trust will ensure that it remains unbuilt and protected as an historical legacy as the trees grow ever taller."

Trust Executive Director Mark Primack notes that "While this property is primarily of local interest and needs work on access, we hope it is the beginning of a larger Brewster Woods project that will preserve one of the oldest settled landscapes in North America in perpetuity." Both Primack and the Mittells hope that other landowners around Eagle's Nest Marsh will consider similar gifts of land or conservation restrictions, which often have tax advantages for the landowner, to keep the marsh edge a place of quiet beauty forever.



Mary Louise and David Mittell with Wildland Trust President Jerry Ingersoll in front of the new Brewster Woods preserve.

The Wildlands Trust owns or holds conservation restrictions on 71 parcels in the region. Other properties owned by the trust in Duxbury include the Capt. David Cushman Preserve on the Bluefish River, the Philbrick Preserve on West St. (Trust headquarters), and Great Harry Foot Island off of Abrams Hill.